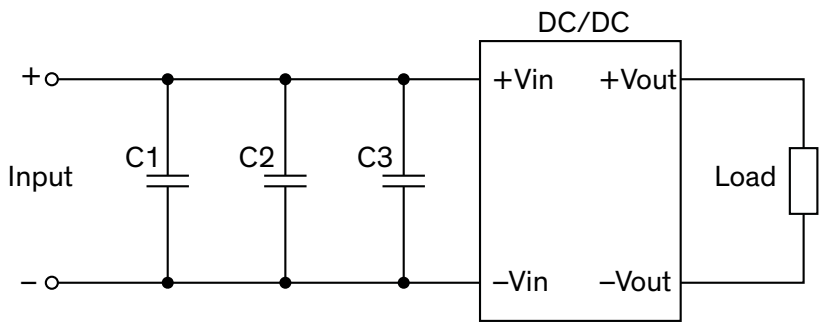


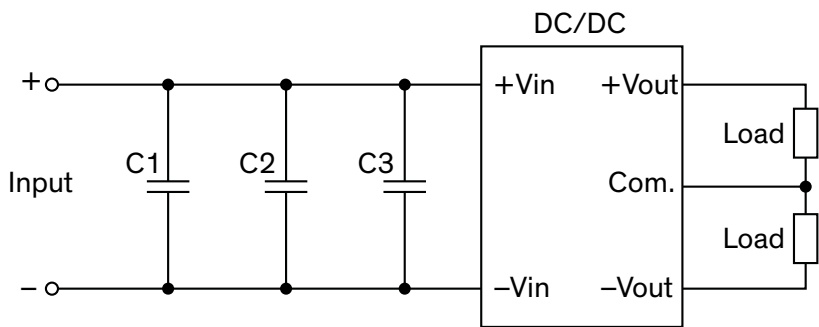
EMC Consideration

Suggested filter to comply with EN 55032 Class A limits

Single output models



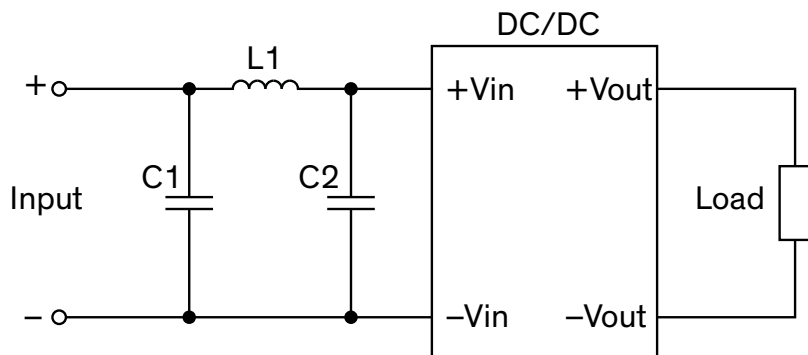
Dual output models



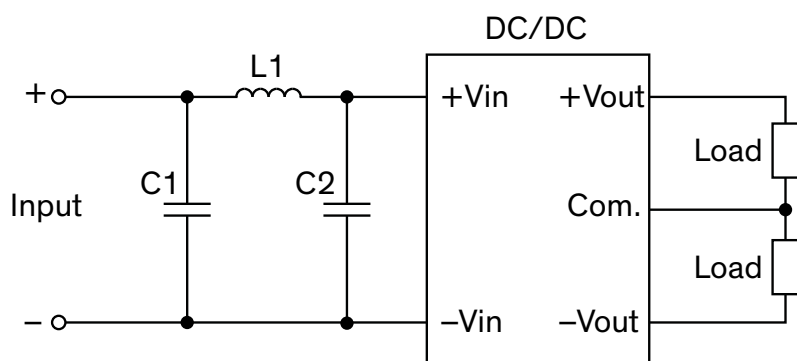
Suggested components to comply with EN 55032 Class A limits			
Model	C1	C2	C3
TMAP 05xxx	-	-	68 μ F / 10 V 1206 MLCC
TMAP 12xxx	-	47 μ F / 25 V 1206 MLCC	47 μ F / 25 V 1206 MLCC
TMAP 24xxx	47 μ F / 50 V 1206 MLCC	47 μ F / 50 V 1206 MLCC	47 μ F / 50 V 1206 MLCC

Suggested filter to comply with EN 55032 Class B limits

Single output models



Dual output models



Suggested components to comply with EN 55032 Class B limits

Model	L1	C1	C2
TMAP 05xxx	470 μ H / 60 mA / 19 Ohm SMD-Inductor LQH32CN	10 μ F / 16 V 1206 MLCC	10 μ F / 16 V 1206 MLCC
TMAP 12xxx	470 μ H / 60 mA / 19 Ohm SMD-Inductor LQH32CN	22 μ F / 35 V 1206 MLCC	22 μ F / 35 V 1206 MLCC
TMAP 24xxx	470 μ H / 60 mA / 19 Ohm SMD-Inductor LQH32CN	22 μ F / 35 V 1206 MLCC	22 μ F / 35 V 1206 MLCC