

EMI Consideration

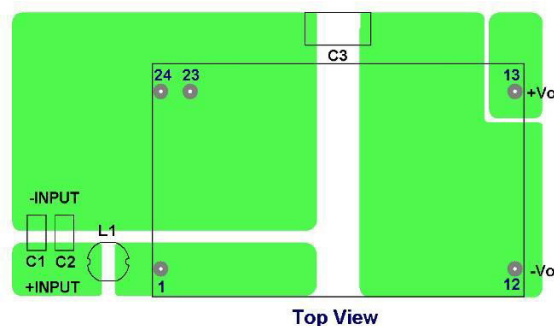
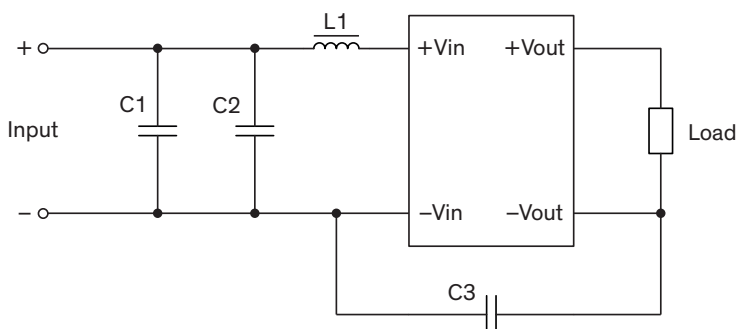
Suggested filter to comply with EN 55032 Conducted and Radiated Emissions Class A limits

THB 6 series meet EN 55032 Conducted and Radiated Emissions Class A without external components.

Suggested filter to comply with EN 55032 Conducted and Radiated Emissions Class B limits

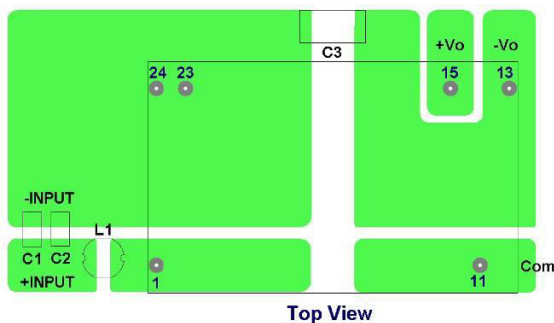
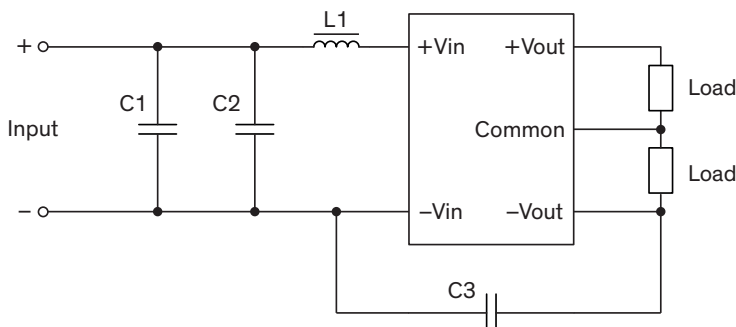
Single output models

PCB layout suggestion



Dual output models

PCB layout suggestion



Suggested components to comply with EN 55032 Conducted and Radiated Emissions Class B limits

Model	C1	C2	C3	L1
THB 6-12xx	4.7 μ F / 25 V 1206 MLCC	-	100 pF / 6 kV 2211 MLCC	1 μ H / 2.08 A SCD03021T
THB 6-24xx	2.2 μ F / 50 V 1206 MLCC	2.2 μ F / 50 V 1206 MLCC		
THB 6-48xx	1 μ F / 100 V 1206 MLCC	1 μ F / 100 V 1206 MLCC		