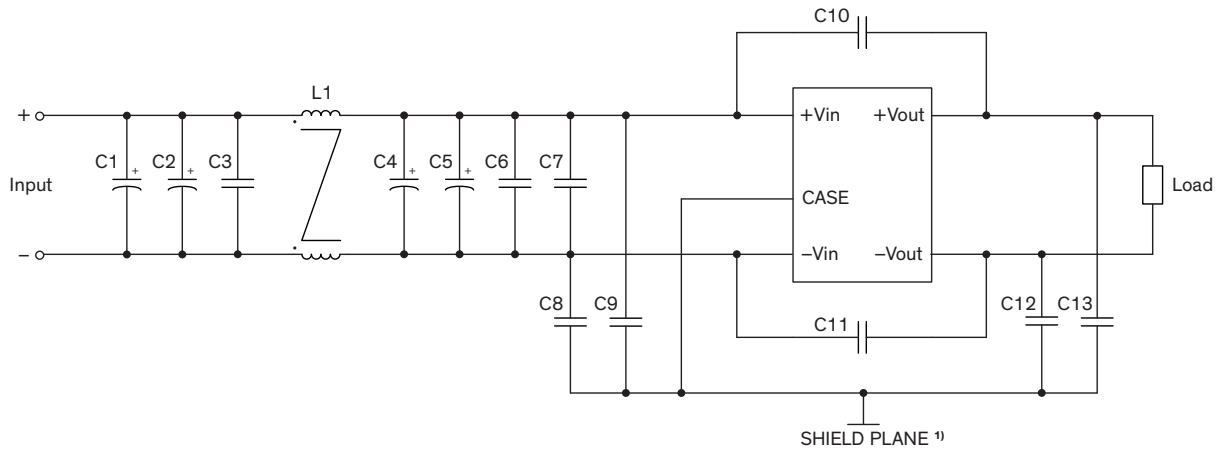


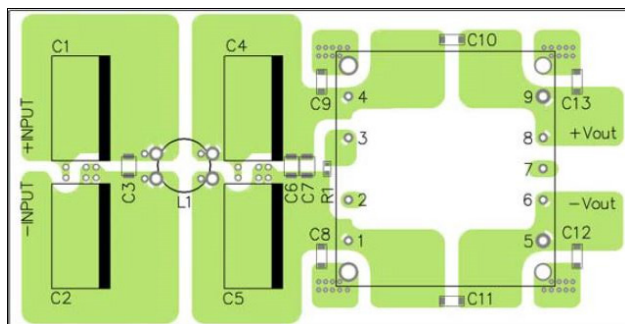
EMI Consideration

Suggested filter to comply with EN 55032 Conducted and Radiated Emissions Class A limits

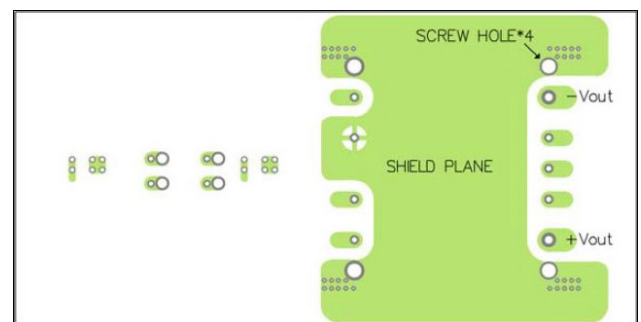
Filter suggestion



PCB layout suggestion (Top view)



PCB layout suggestion (Bottom view)



¹⁾ SHIELD PLANE: floating / isolated

Suggested components to comply with EN 55032 Conducted and Radiated Emissions Class A limits

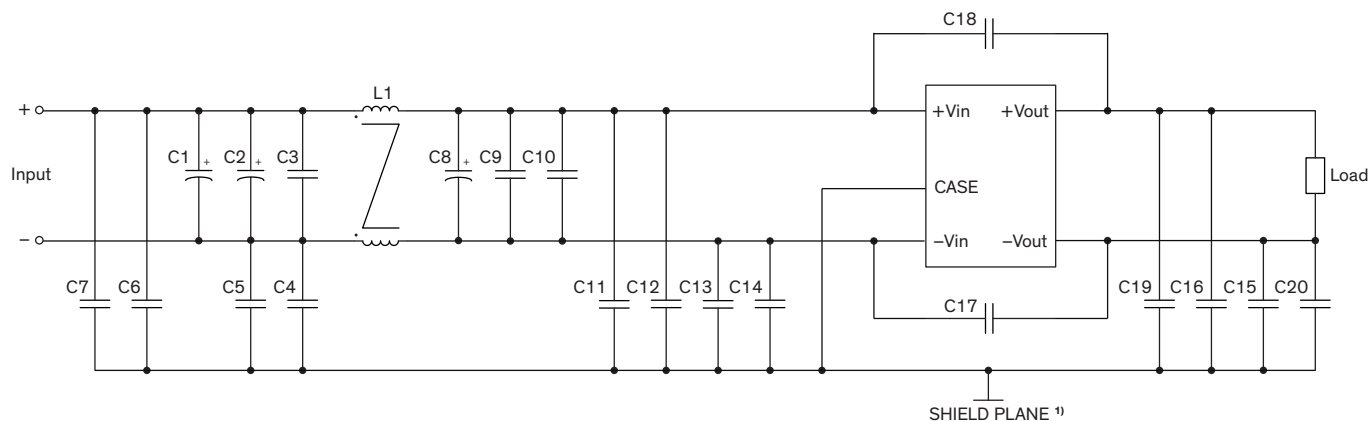
Model	C1, C2, C4	C3, C6, C7	C8, C9, C10, C11, C13	C12	L1
TEP 100-24xxWIR	470 μ F / 50 V / KY Al Cap. (lie down)	4.7 μ F / 50 V 1812 MLCC	1'000 pF / 3 kV 1808 MLCC	3'300 pF / 3 kV 1808 MLCC	TCK-086
TEP 100-48xxWIR	220 μ F / 100 V / KY Al Cap. (lie down)	2.2 μ F / 100 V 1812 MLCC		1'000 pF / 3 kV 1808 MLCC	TCK-087

TCK-086 datasheet: www.tracopower.com/overview/tck-086

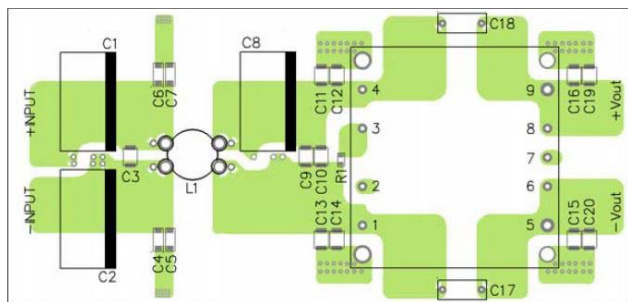
TCK-087 datasheet: www.tracopower.com/overview/tck-087

Suggested filter to comply with EN 55032 Conducted and Radiated Emissions Class A limits

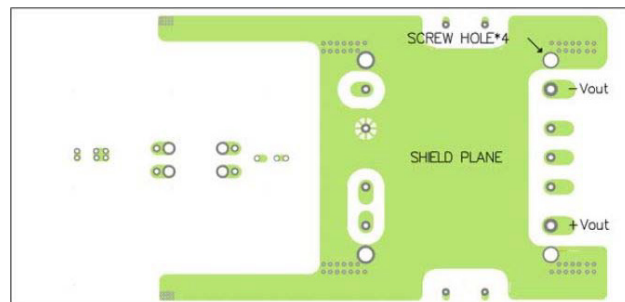
Filter suggestion



PCB layout suggestion (Top view)



PCB layout suggestion (Bottom view)



¹⁾ SHIELD PLANE: floating / isolated

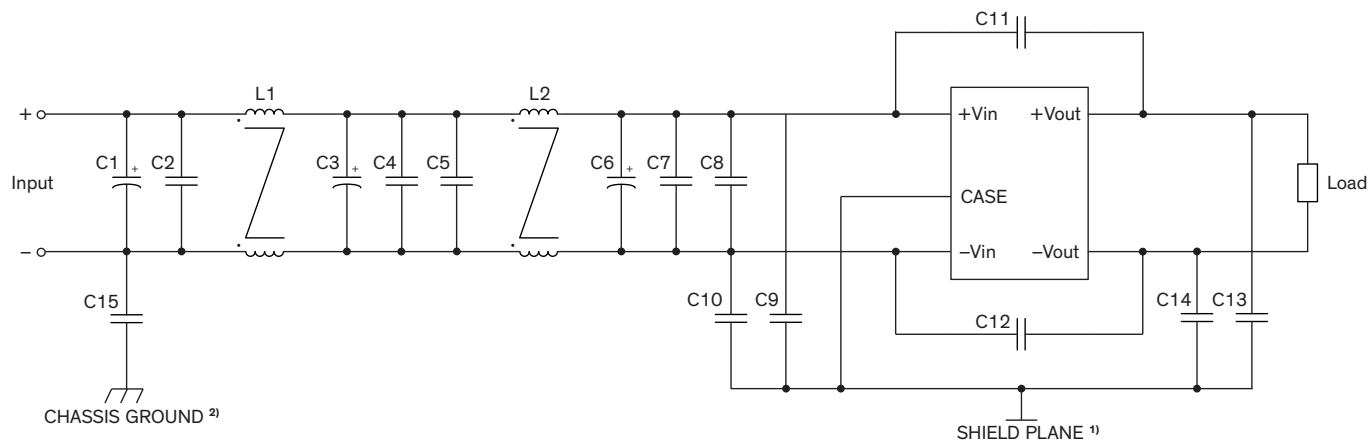
Suggested components to comply with EN 55032 Conducted and Radiated Emissions Class A limits

Model	C1, C2, C8	C10	C6, C11, C12, C13, C14, C15, C16, C19, C20	C17, C18	L1
TEP 100-72xxWIR	100 μ F / 250 V / BXF Al Cap. (lie down)	1 μ F / 250 V 1812 MLCC	1'000 pF / 5 kV 1808 MLCC	2'200 pF TDK CD Y1	TCK-123

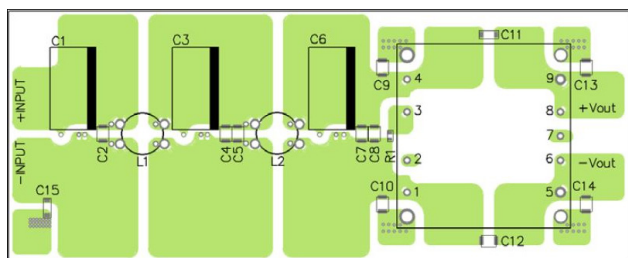
TCK-123 datasheet: www.tracopower.com/overview/tck-123

Suggested filter to comply with EN 55032 Conducted and Radiated Emissions Class B limits

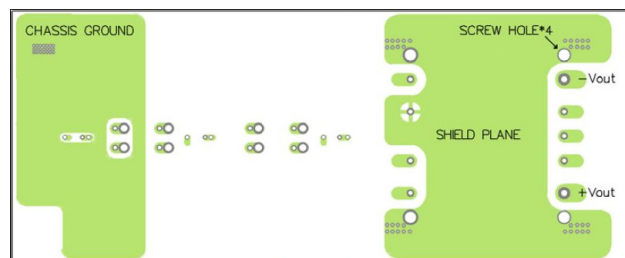
Filter suggestion



PCB layout suggestion (Top view)



PCB layout suggestion (Bottom view)



1) SHIELD PLANE: floating / isolated

2) CHASSIS GROUND: Connect to chassis or earth, if not available leave floating

Suggested components to comply with EN 55032 Conducted and Radiated Emissions Class B limits

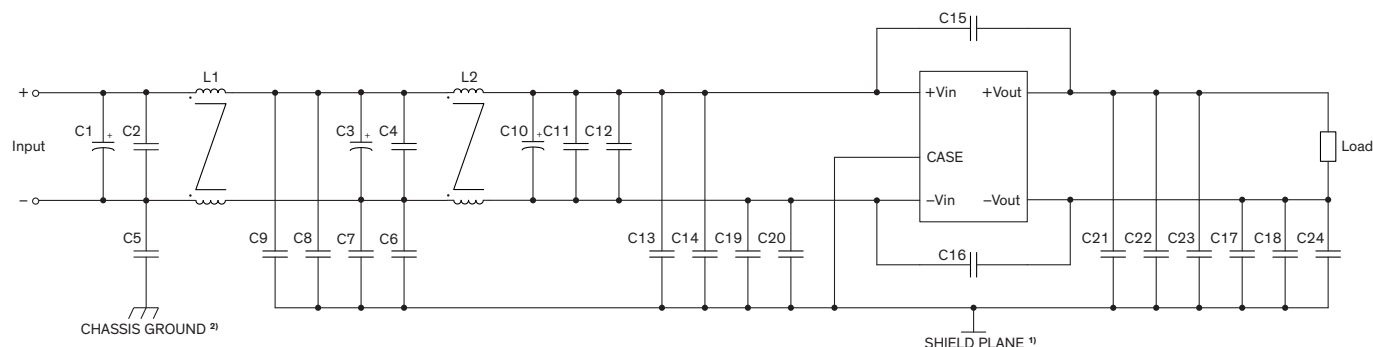
Model	C1, C3, C6	C2, C4, C5, C7, C8	C9, C10	C11	C12	C13, C14	C15	L1, L2
TEP 100-24xxWIR	470 μ F 50 V / KY Al Cap. (lie down)	4.7 μ F 50 V 1812 MLCC	10 nF 2 kV 1812 MLCC	1'000 pF 3 kV 1808 MLCC	4'700 pF 3 kV 1812 MLCC	10 nF 2 kV 1812 MLCC	-	TCK-086
TEP 100-48xxWIR	220 μ F 100 V / KY Al Cap. (lie down)	2.2 μ F 100 V 1812 MLCC	10 nF 2 kV 1812 MLCC	2'200 pF 3 kV 1808 MLCC	4'700 pF 3 kV 1812 MLCC	10 nF 2 kV 1812 MLCC	1'000 pF 3 kV 1808 MLCC	TCK-087

TCK-086 datasheet: www.tracopower.com/overview/tck-086

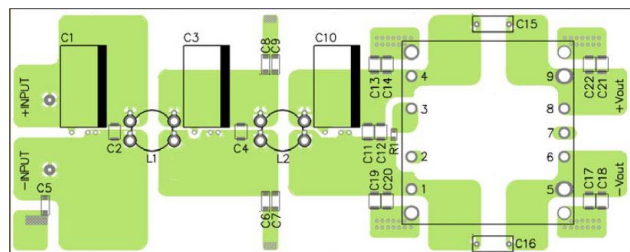
TCK-087 datasheet: www.tracopower.com/overview/tck-087

Suggested filter to comply with EN 55032 Conducted and Radiated Emissions Class B limits

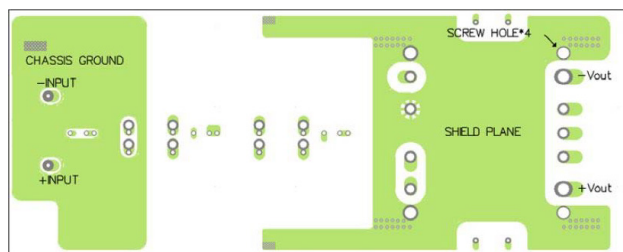
Filter suggestion



PCB layout suggestion (Top view)



PCB layout suggestion (Bottom view)



1) SHIELD PLANE: floating / isolated

2) CHASSIS GROUND: Connect to chassis or earth, if not available leave floating

Suggested components to comply with EN 55032 Conducted and Radiated Emissions Class B limits

Model	C1, C3, C10	C2, C5, C23, C24	C4, C11, C12	C6, C7, C8, C9, C13, C14, C17, C18, C19, C20, C21, C22	C15, C16	L1	L2
TEP 100-72xxWIR	150 μ F 200 V / KY	-	1 μ F / 250 V 1812 MLCC	1'000 pF / 250 Vac 1808 MLCC	2'200 pF TDK CD Y1	TCK-123	TCK-088
TEP 100-7218WIR	Al Cap. (lie down)	1 μ F / 250 V 1812 MLCC	-		4'700 pF TDK CD Y1		

TCK-088 datasheet: www.tracopower.com/overview/tck-088

TCK-123 datasheet: www.tracopower.com/overview/tck-123