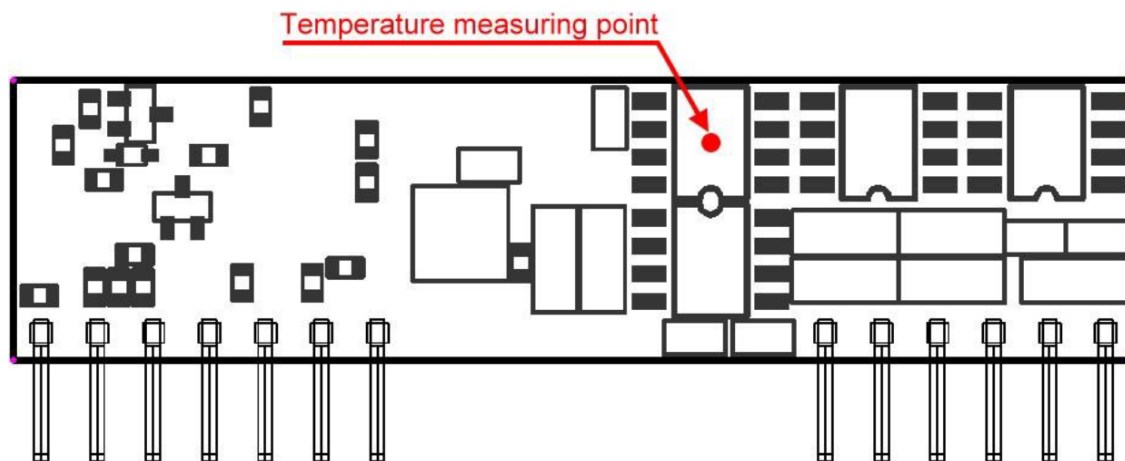


## Thermal Consideration

The power module operates in a variety of thermal environments; however, sufficient cooling should be provided to help ensure reliable operation of the unit. Heat is removed by conduction, convention, and radiation to the surrounding Environment. Proper cooling can be verified by measuring the point as the figures below. The temperature at this location should not exceed 115°C. When operating, adequate cooling must be provided to maintain the test point temperature at or below 115°C. Although the maximum point Temperature of the power modules is 115°C, you can limit this Temperature to a lower value for extremely high reliability.

The unit will shutdown if the thermal reference point exceeds 125 °C typ. but the thermal shutdown is not intended as a guarantee that the unit will survive temperature beyond its rating. The module will automatically restarts after it cools down.

TOS 30SIL, Bottom View



TOS 30SM, Top View

