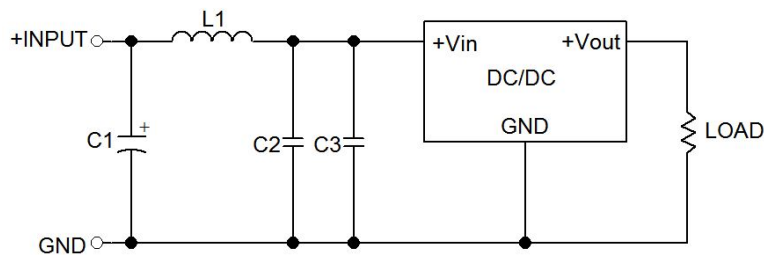
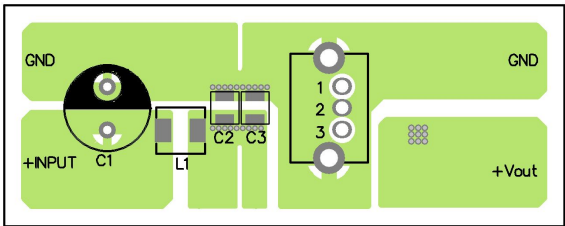


EMI Consideration

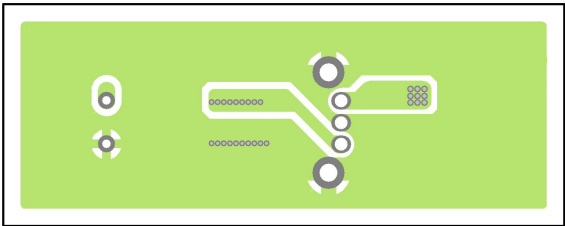
Suggested filter to comply with EN 55032 Conducted and Radiated Emissions Class A and Class B limits



PCB TOP layout suggestion



PCB BOT layout suggestion



Suggested components to comply with EN 55032 Conducted and Radiated Emissions Class A limits				
Model	C1	C2	C3	L1
TSR 1-48xxWI	33 $\mu$ F / 100 V Al Cap. Chemi-com KY	2.2 $\mu$ F / 100 V 1210 MLCC	-	4.7 $\mu$ H TCK-176

Suggested components to comply with EN 55032 Conducted and Radiated Emissions Class B limits				
Model	C1	C2	C3	L1
TSR 1-48xxWI	33 $\mu$ F / 100 V Al Cap. Chemi-com KY	4.7 $\mu$ F / 100 V 1210 MLCC	4.7 $\mu$ F / 100 V 1210 MLCC	4.7 $\mu$ H TCK-176

TCK-176 datasheet: [www.tracopower.com/overview/tck-176](http://www.tracopower.com/overview/tck-176)